

# Euro Sink Combines Flair With Functionality.



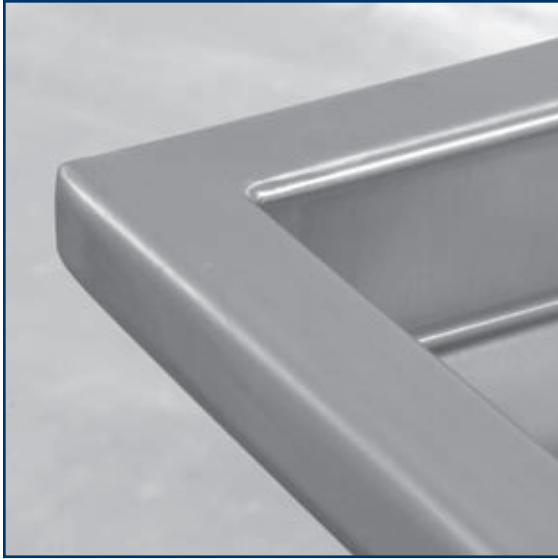
# amtekco

 A Wasserstrom Company

Manufacturers of Quality Products for the Food Marketing Industry

1205 Refugee Road • Columbus, Ohio 43207  
800-336-4677 or 614-228-6590 • Fax: 614-737-8017  
[www.amtekco.com](http://www.amtekco.com)

# Euro Sink Combines Flair With Functionality.



*Amtekco's new Euro Sink incorporates a stylish and attractive square edge finish that nicely matches the worktables in your prep areas.*



*The Euro Sink's die formed drain system quickly and completely empties the sink bowl.*

## ***Benefits:***

- Stylish, modern look
- Longer lasting, constructed of high quality stainless steel
- Mounting brackets and turned-up back splash provides for easy installation in the field
- Fully fabricated
- Channel edge
- Amtekco's custom capabilities allow for easy replacement of current sink
- Increased opportunity to supply full package of sinks for commercial and industrial projects

## ***Standard Specifications:***

- 16 gauge 300 stainless steel fabrication
- 3 1/2" drain opening w/crumb cup drain and basket strainer 1 1/2" IPS
- Fully welded, seamless and polished to a #3 commercial finish
- Radiused, horizontal and vertical corners (NSF)
- Die formed drain system
- Turned-up back splash for flush wall mounting
- NSF listed and labeled

## ***Options:***

- 14 gauge stainless steel fabrication
- Different bowl sizes and depths
- Additional faucet drillings
- Sound deadening to underside of sink bowl
- Single or double drain boards
- ADA options
- Heavy-duty faucets
- Lever action wastes

***Contact your Amtekco sales representative: 1-800-336-4677***

# amtekco

**W** A Wasserstrom Company

Manufacturers of Quality Products for the Food Marketing Industry

***Equipment That Means Business***

1205 Refugee Road • Columbus, Ohio 43207 • 800-336-4677 • 614-228-6590 • 614-737-8017 (fax) • [www.amtekco.com](http://www.amtekco.com)