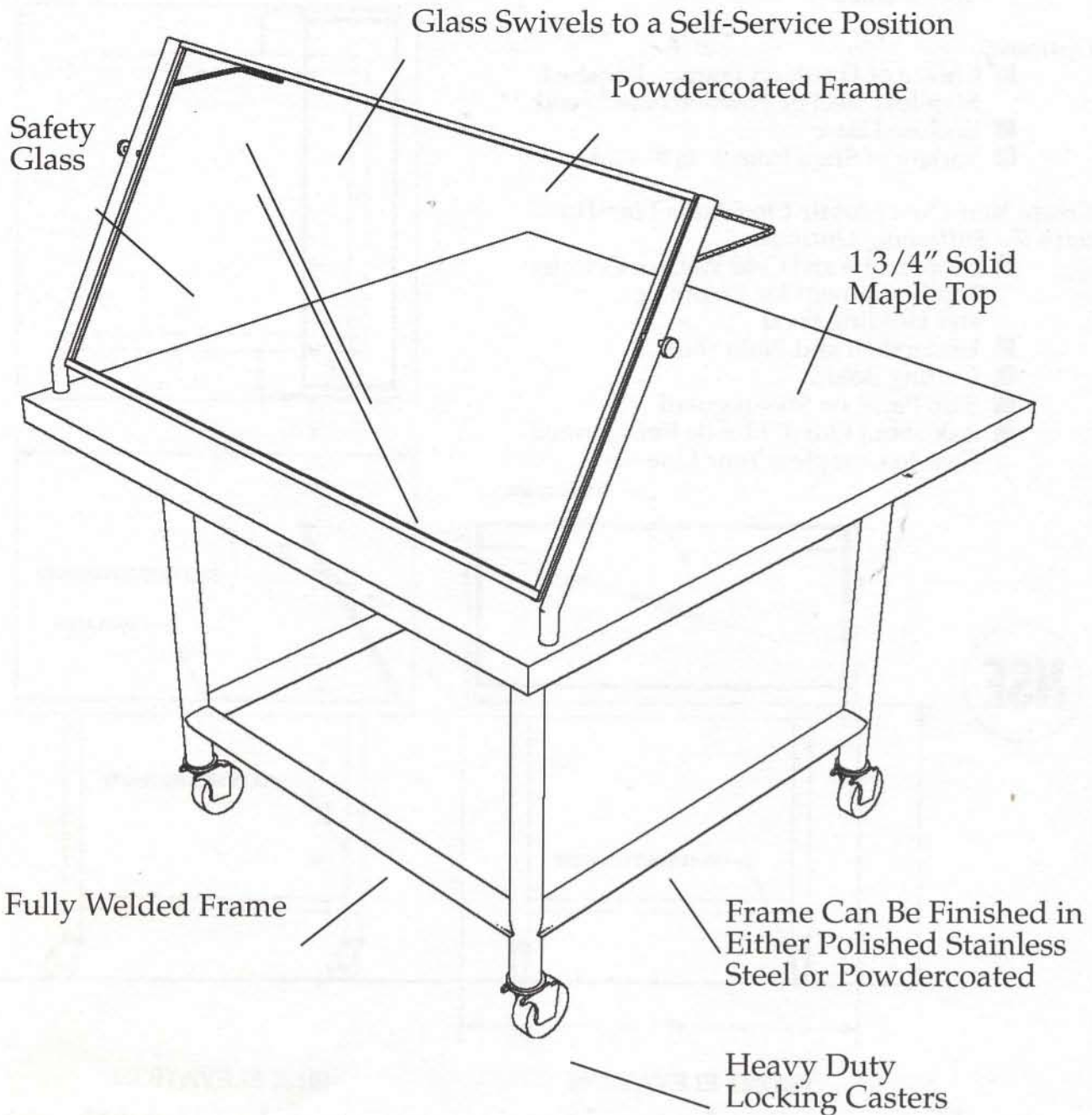


amtekco

A Wasserstrom Company

Manufacturers of Quality Products for the Food Marketing Industry

Amtekco's new Chef Table offers many prep/display options. Use this table in full-service or self-service applications.



Mobile Chef Table

amtekco

A Wasserstrom Company

Manufacturers of Quality Products for the Food Marketing Industry

Toll Free 1-800-336-4677 • Local 614-228-6590 • FAX 614-443-4807

Columbus, Ohio 43207

www.amtekco.com

Keep Your Sales Moving with Amtekco's Mobile Tables

amtekco

 A Wasserstrom Company
 Manufacturers of Quality Products for the Food Marketing Industry

Features:

- Solid Maple Butcher Block Top
- Heavy Duty Casters
- Fully Welded Base Construction
- Dual Function Sneezeguard with Safety Glass

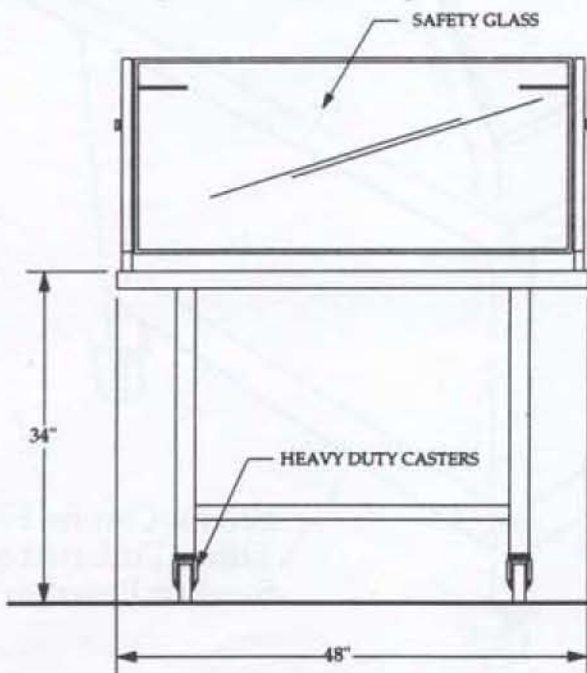
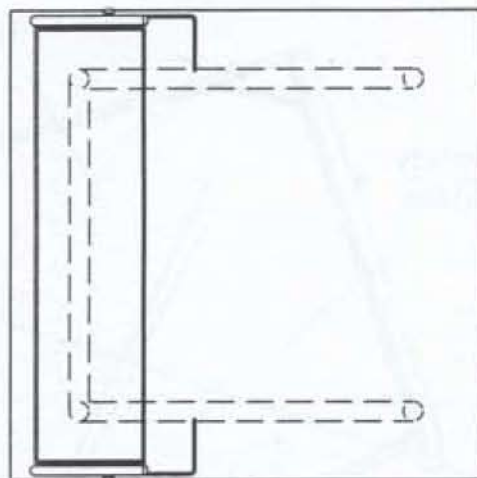
Options:

- Choice of Finish on Frame - Polished Stainless Steel or Powdercoated Steel
- Enclosed Base
- Variety of Sizes from 4' to 8' Wide

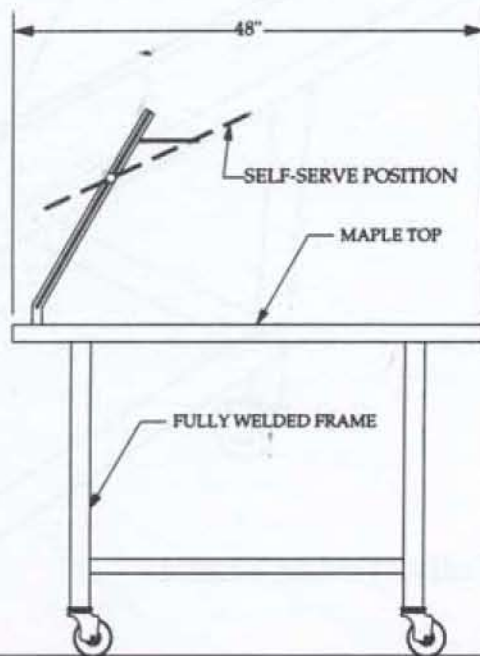
Create Your Own Mobile Chef Table Line-Up with the Following Options:

- Drop-in Hot and Cold Wells or Counter Top Equipment for Prepping and Holding Food
- Undershelf and Plate Shelf
- Cutting Board
- Side Panel on Sneezeguard
- Ask about Our 4' Mobile Refrigerated Case to Complete Your Line-up

PLAN VIEW



FRONT ELEVATION



SIDE ELEVATION

If you can imagine it, we can build it!

amtekco
 A Wasserstrom Company

Toll Free 1-800-336-4677 • Local 614-228-6590 • FAX 614-443-4807
 Columbus, Ohio 43207
www.amtekco.com

Manufacturers of Quality Products for the Food Marketing Industry