

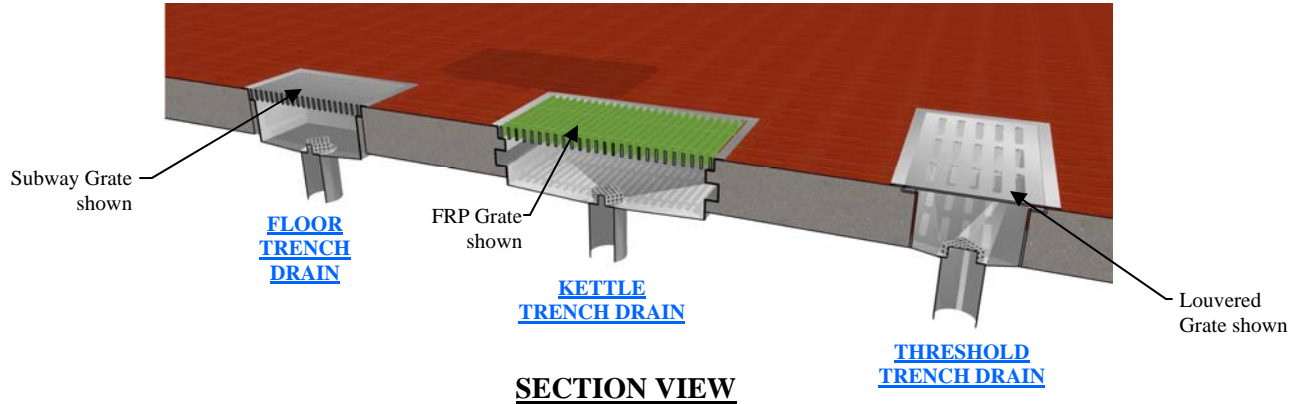


TRENCH DRAINS

PROJECT#: _____

ITEM# _____

MODEL# _____



COMMERICAL FLOOR TRENCH DRAINS

The Professional's Choice

Engineered specifically for high demand commercial, industrial and institutional applications, Amtekco's trench drains are the choice of professionals world-wide. Thirty years of experience in the design and fabrication of stainless steel products go into every trench drain we build.

Amtekco allows you to choose from a wide variety of trench sizes for different applications. We offer several grate configurations at standard prices.

See why Amtekco is the best choice!

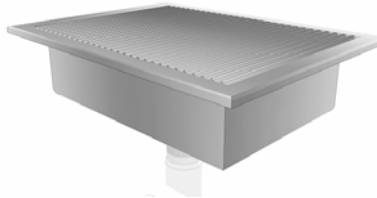
Superior Construction

All trench drains are constructed of 14 gauge, type 304, 18-8 stainless steel. Every seam is heli-arc welded and precision ground. Finally, all exposed surfaces are polished to provide easy maintenance. For added strength, each trough is laterally reinforced with 3/8 inch structural stainless steel rods.

Superior Design

Amtekco allows you to choose from a wide variety of trench configurations and offers 4 different styles of grates. Each trench drain is pitched to the drain with perforated strainers or optional sump drain and sediment basket.

TRENCH DRAIN TYPES:



FLOOR TRENCH DRAIN / FT

Standard lengths: 2' to 12'

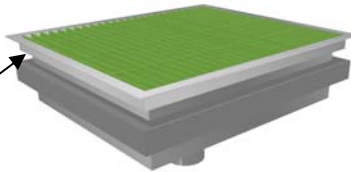
Standard width: 12" to 18"

Standard pitch: 1/4" to 1"

Grates Available: S/S Subway, S/S Louvered, FRP non-slip

Options Available: Sump trench drain with removable sediment basket, Prison security grates, Flashing flange

Anti Splash Flange



KETTLE TRENCH DRAIN / KT

Standard lengths: 3' to 10'

Standard width: 24"

Standard pitch: 1/4" to 1"

Grates Available: S/S Subway, S/S Louvered, FRP non-slip

Options Available: Sump drain with removable sediment basket, Prison security grates, Flashing flange



THRESHOLD TRENCH DRAIN / DT

Standard lengths: 2' to 10'

Standard width: 6" to 8"

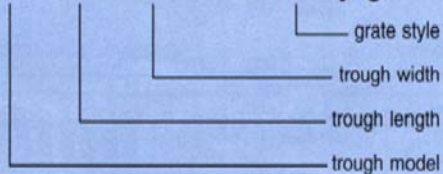
Standard pitch: 1/4" to 1"

Grates Available: S/S Subway, S/S Louvered, FRP non-slip

Options Available: Sump drain with removable sediment basket, Prison security grates, Flashing flange

How to Specify

FT - 72 x 12 - w/subway grate



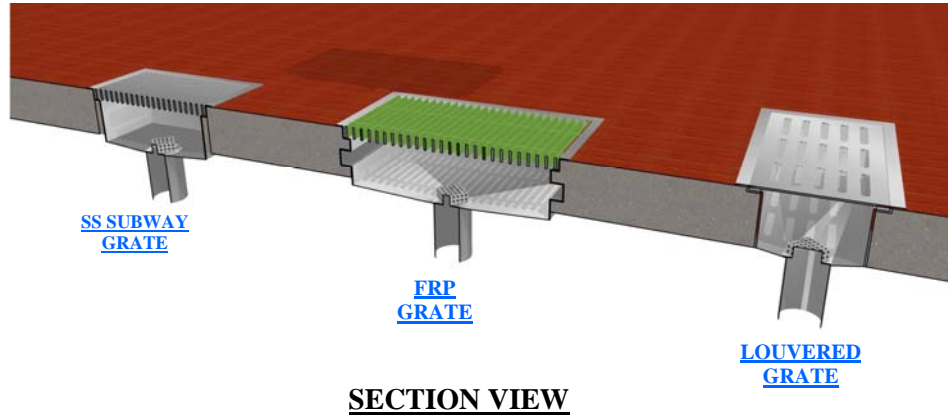


TRENCH DRAIN GRATES

PROJECT#: _____

ITEM# _____

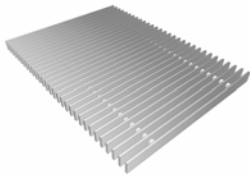
MODEL# _____



SECTION VIEW

FLOOR GRATE TYPES:

COMMERICAL FLOOR GRATES



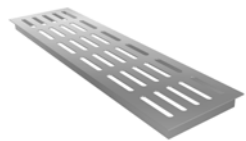
S/S SUBWAY GRATE

The Subway grate is ideally suited for use in areas with heavy equipment, where strength is essential. Constructed of 1" X 3/16" stainless steel bars spaced on 1" centers to stainless steel rods. This grate is highly recommended for maximum trench drainage. The Subway Grate conforms to ASTM specification A351, rated class D per the DIN EN1433 top load classification.



FRP NON SLIP GRATE

The FRP grate (fiberglass reinforced plastic) grate is exceptionally strong yet lightweight. The "grip top" edge allows for a firm footing, even when wet. The FRP grate is fire resistant and has a class 1 flame spread rating of 25 or less. (ANSI No. 2.5, NFPA No. 2.55, UL No. 723 and UBC No. 42.1) The FRP Grate conforms to ASTM specification A351 rated class A per the DIN EN1433 top load classification.



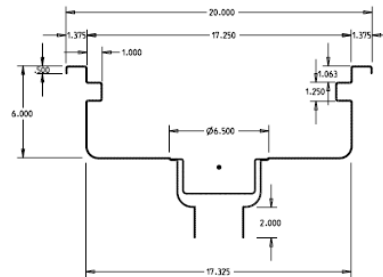
S/S LOUVERED GRATE

The Louvered grate offers cost effective, efficient draining for use in light duty areas where strength is not a primary concern. The louvered grate is constructed of 14 gauge, type 304, 18-8 stainless steel. The Louvered Grate conforms to ASTM specification A351 rated class B per the DIN EN1433 top load classification.

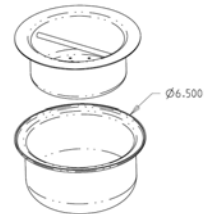


S/S STAMPED GRATE (HEEL PROOF / A.D.A.)

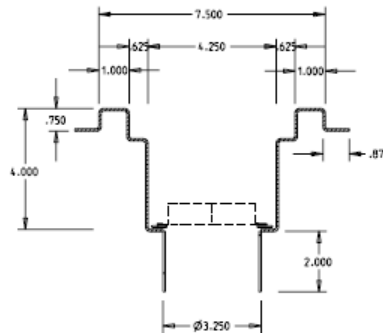
The Stamped grate is designed for use in areas within heavy foot traffic, where appearances and safety are a concern. The 1/4" square holes, spaced 1" on center provide a smooth firm surface that will not "catch" on the small wheels of push-carts and wheelchairs. The stamped grate is constructed on 14 gauge, type 304, 18-8 polished stainless steel. The Stamped Grate conforms to ASTM specification A351 rated class B per the DIN EN1433 top load classification.



KETTLE DRAIN SECTION



DRAIN & STRAINER



DOOR THRESHOLD DRAIN SECTION



PERFORATED STRAINER