

PURCHASED ITEMS

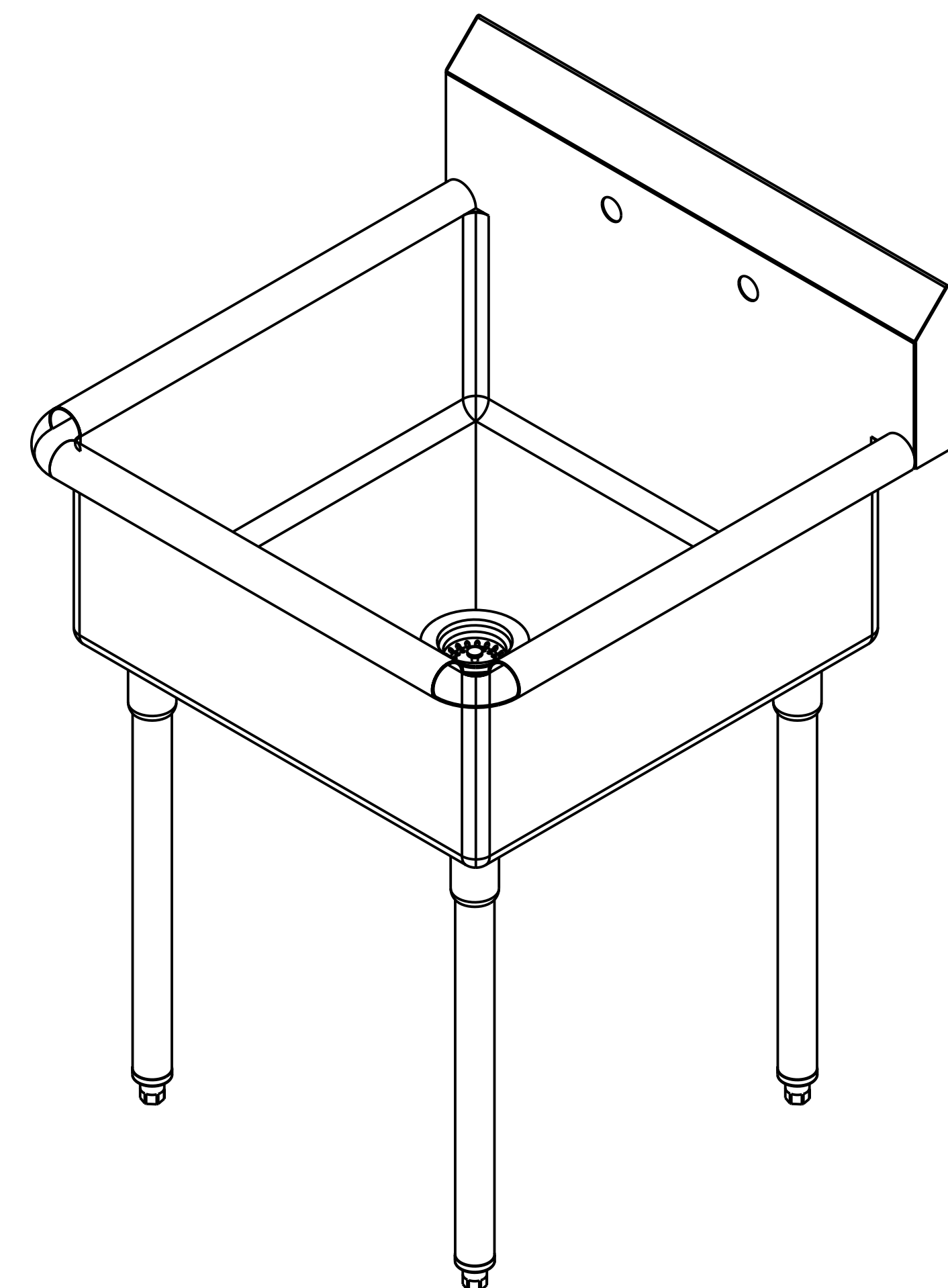
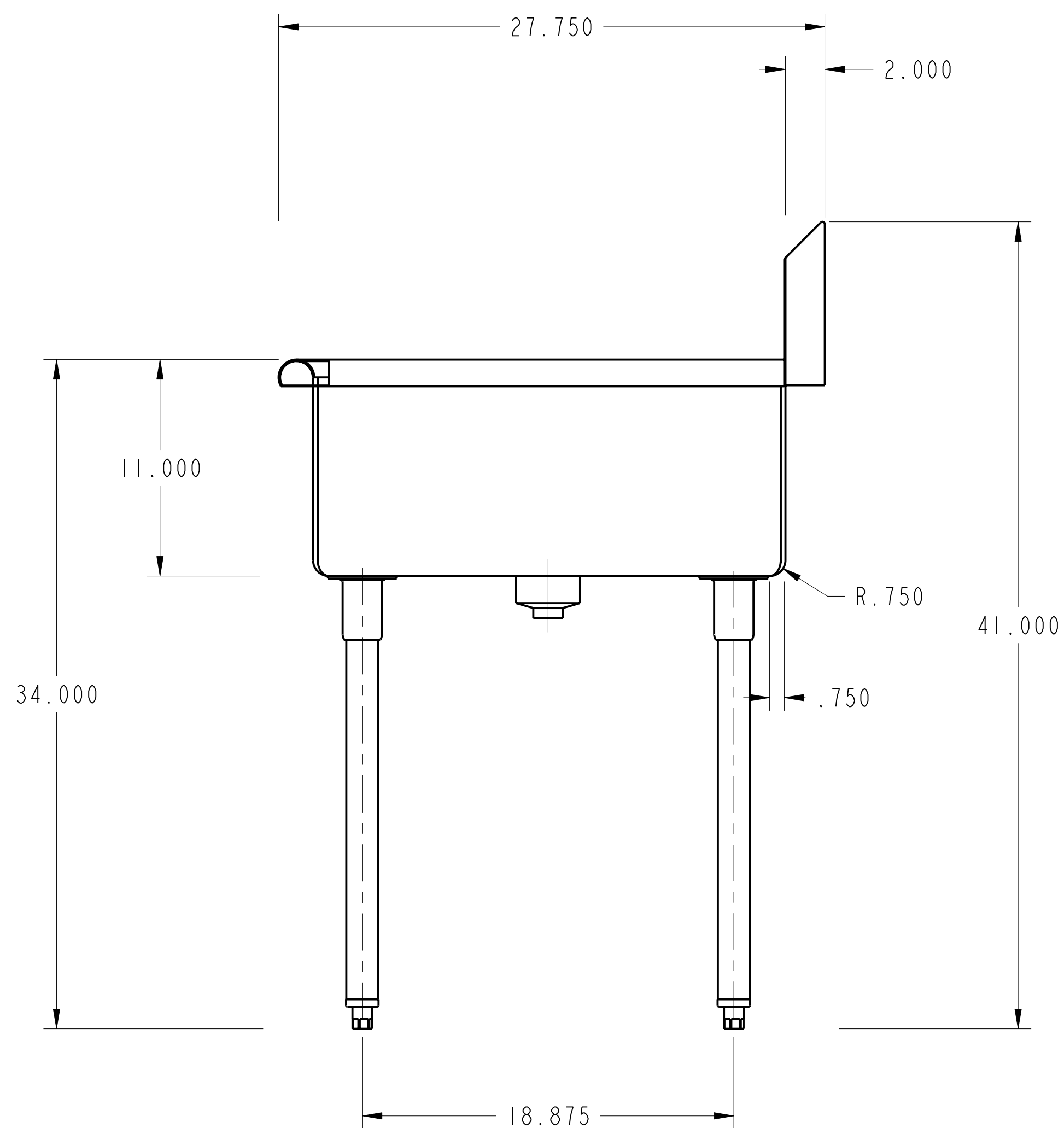
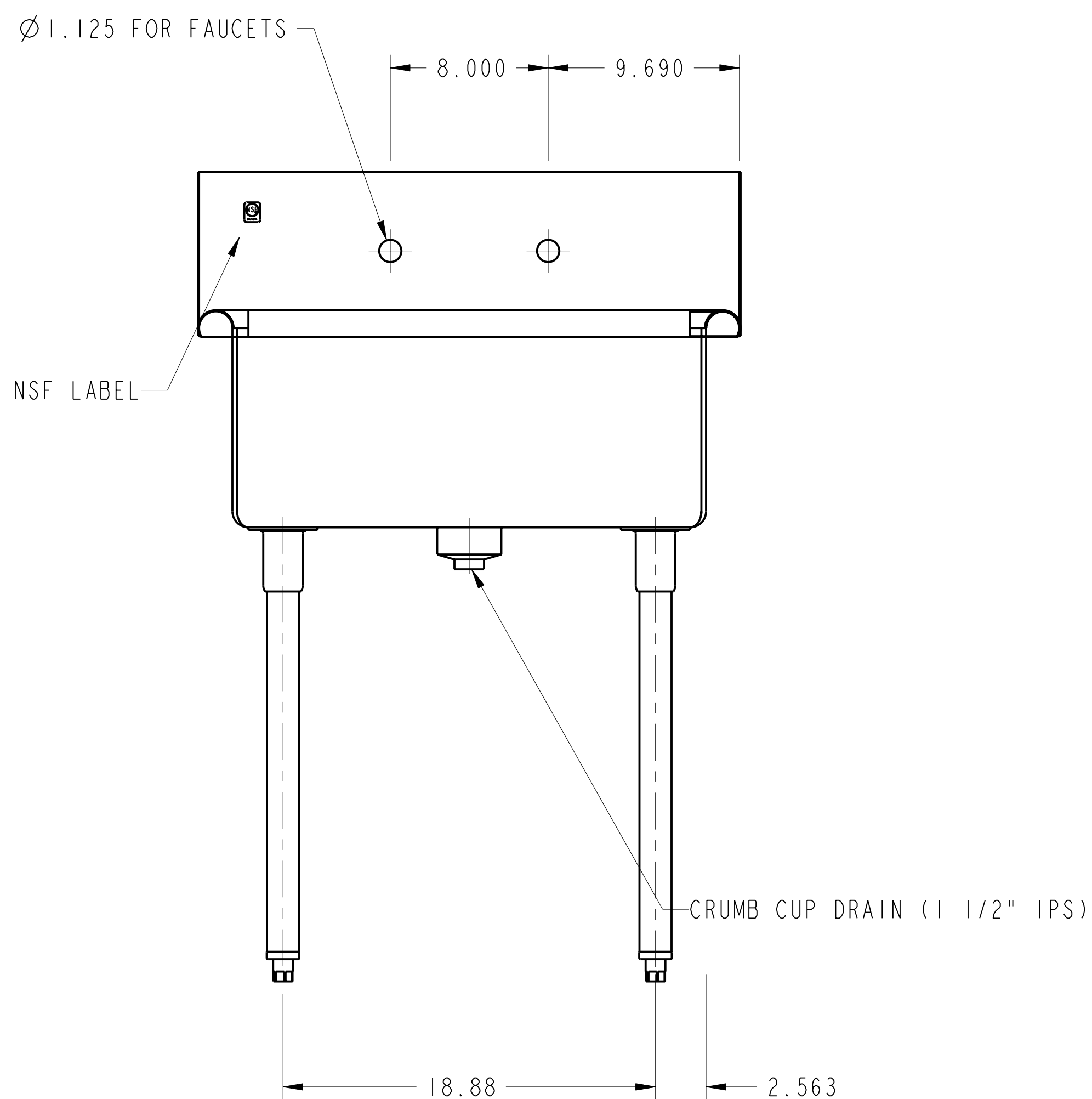
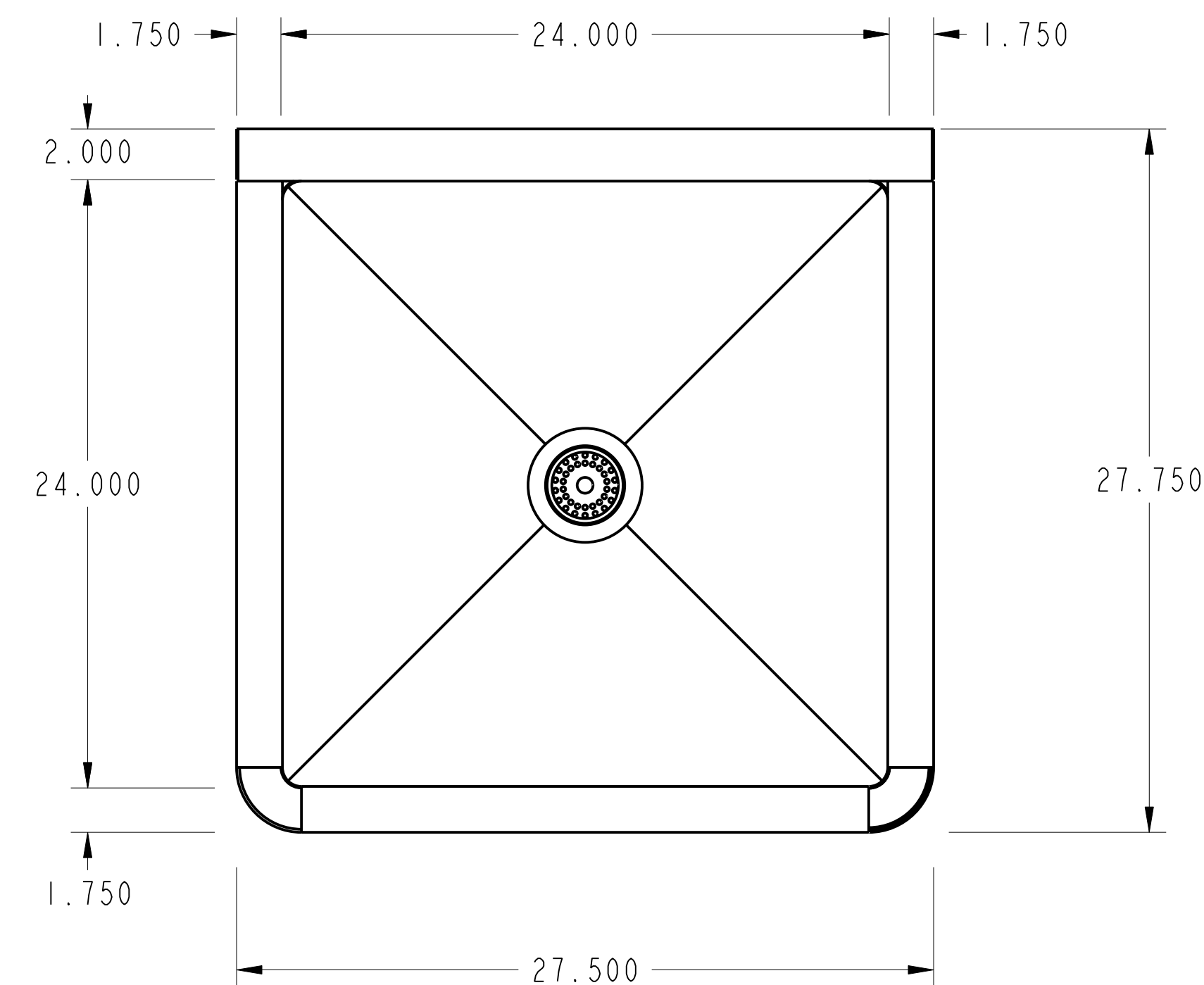
KEY	DESCRIPTION	QTY.	U/M	INV. CODE	VENDOR NAME	PART/MODEL NUMBER	PART TYPE
1	DUO BASKET DRAIN, E38-1010	1	EA	BI	COMPONENT	E38-1010	ASSEMBLY
2	LEG GUSSET	4	EA	BI	COMPONENT	A18-0406	PART
3	S/S ADJUSTABLE BULLET FOOT	4	EA	BI	COMPONENT	A10-0851	PART

TOP: 16 GA S/S ALL WELDED CONSTRUCTION W/ INTEGRAL 11" HIGH BACKSPLASH ALL HORIZONTAL AND VERTICAL CORNERS TO BE COVERED TO 3/4" RAD. WITH INTEGRAL SINK

LEGS: 1 5/8 OD 16 GA S/S TUBING ATTACHED TO GUSSET HOLDERS STUD BOLTED TO BOTTOM OF SINKS

FEET: S/S ADJUSTABLE BULLET TYPE

NOTES: ALL S/S TO BE TYPE 300 SERIES.
ALL S/S TO BE POLISHED TO NO. 3 FINISH
ALL UNEXPOSED WELDS TO BE COVERED W/ ALUMINUM PAINT.
ALL METAL EDGES TO BE FILED SMOOTH.



NO.	DATE	REVISIONS	BY
ASSEM		C-1-2424	



AMTEKCO INDUSTRIES, INC.

MANUFACTURERS OF QUALITY PRODUCTS FOR THE FOOD MARKETING INDUSTRY
1205 REFUGEE ROAD COLUMBUS, OHIO 43207
(614)228-6590 Fax (614)737-8016

AMTEKCO

27 1/2" X 27 3/4" X 34" 1-COMP SINK

APPROVED BY	CKD BY	DATE 07-Aug-06	SCALE 0.188
DATE	CODE	DRAWN BY BALAJI	1 of 1
		DRAWING No.	REV. PART/SHEET
		C-1-2424	

THIS DRAWING IS THE PROPERTY OF AMTEKCO INDUSTRIES, INC., AND IS TO REMAIN IN THE POSSESSION OF OUR REPRESENTATIVE UNLESS PERMISSION IS GIVEN BY AMTEKCO INDUSTRIES, INC., AND MUST BE RETURNED WHEN REQUESTED.