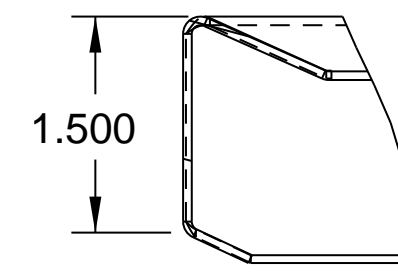
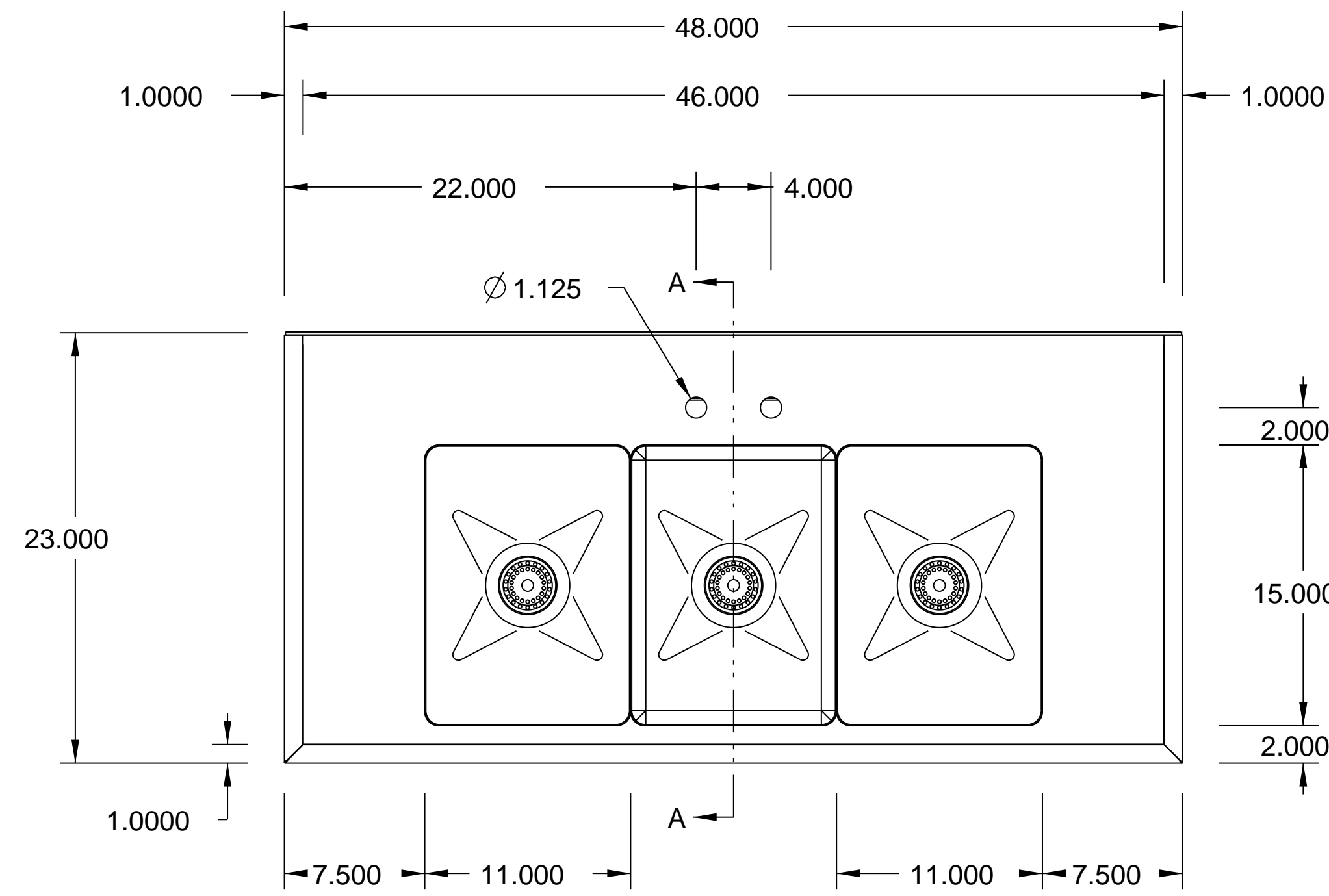


PURCHASED ITEMS

KEY	DESCRIPTION	QTY.	U/M	INV. CODE	VENDOR NAME	PART/MODEL NUMBER	PART TYPE
1	DUO BASKET DRAIN, E38-1010	3	EA	BI	COMPONENT	E38-1010	ASSEMBLY
2	FAUCET	1	EA	BO	COMPONENT	K11-4012_BO	PART
3	LEG GUSSET	4	EA	BI	COMPONENT	A18-0406	PART
4	S/S ADJUSTABLE BULLET FOOT	4	EA	BI	COMPONENT	A10-0851	PART



SPL MARINE EDGE
DETAIL A
SCALE 0.750

TOP: 16 GA. STN/STL ALL WELDED CONSTRUCTION w/ INTEGRAL 4 7/8" VERTICAL CORNERS TO BE COVERED TO A 1/2" RADIUS. SINKS TO BE

BACKSPLASH. ALL HORIZONTAL AND WELDED INTEGRAL AS SHOWN.

SINKS: 16 GA. STN/STL ALL WELDED CONSTRUCTION. ALL INTERIOR CORNERS TO WITH SPHERICAL INTERSECTIONS. BOTTOM TO BE CREASE TO OPENING

BE COVERED TO A 3/4" RAD. FOR LEVER ACTION WASTE AS SHOWN.

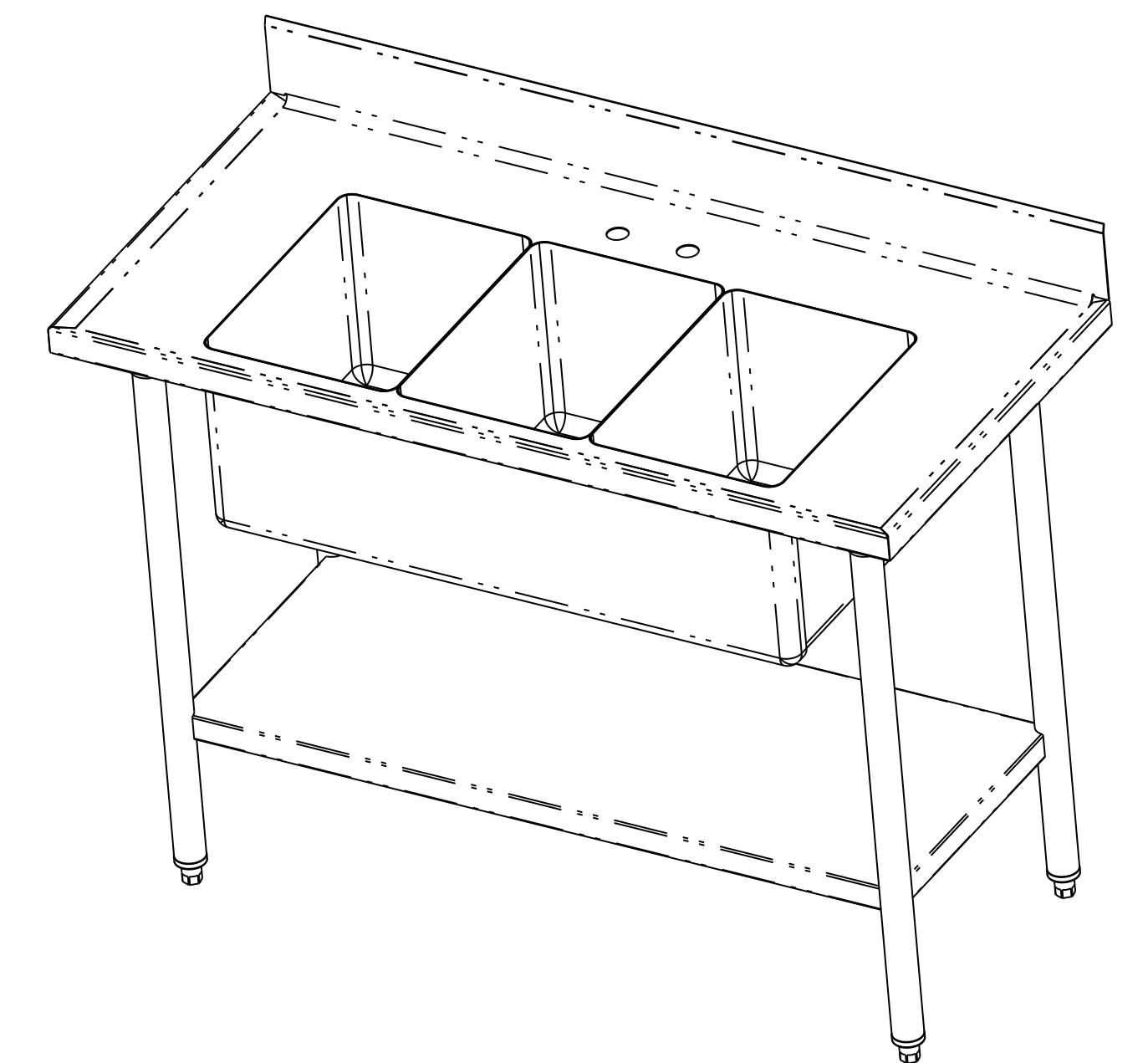
UNDERSHELF: 18 GA. STN/STL FULLY WELDED TO LEGS

LEGS: 1 5/8" O.D. 16 GA. STN/STL TUBING HELD IN STN/STL LEG HOLDERS REINFORCING PLATE ON UNDER SIDE OF SINK BOWLS.

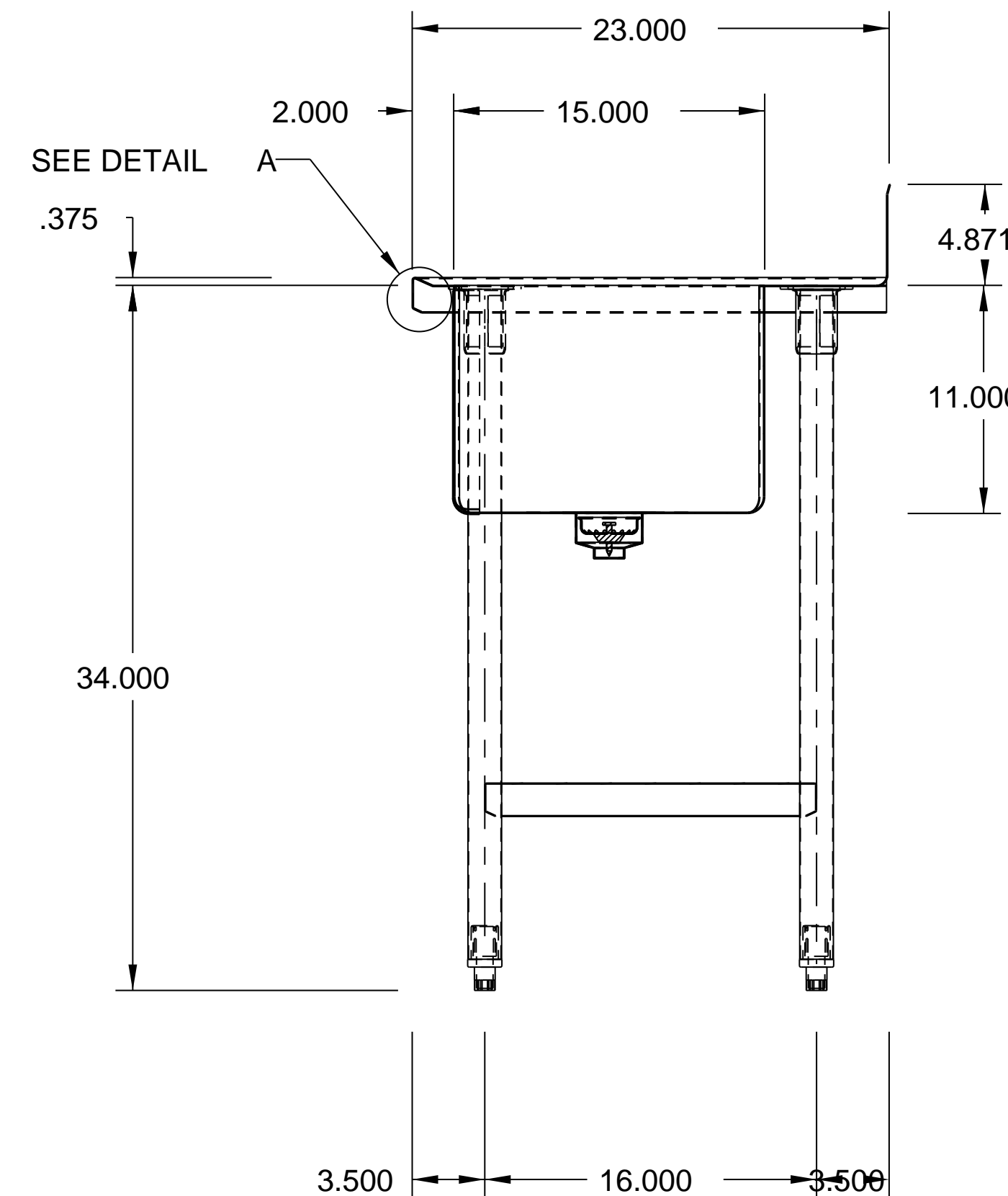
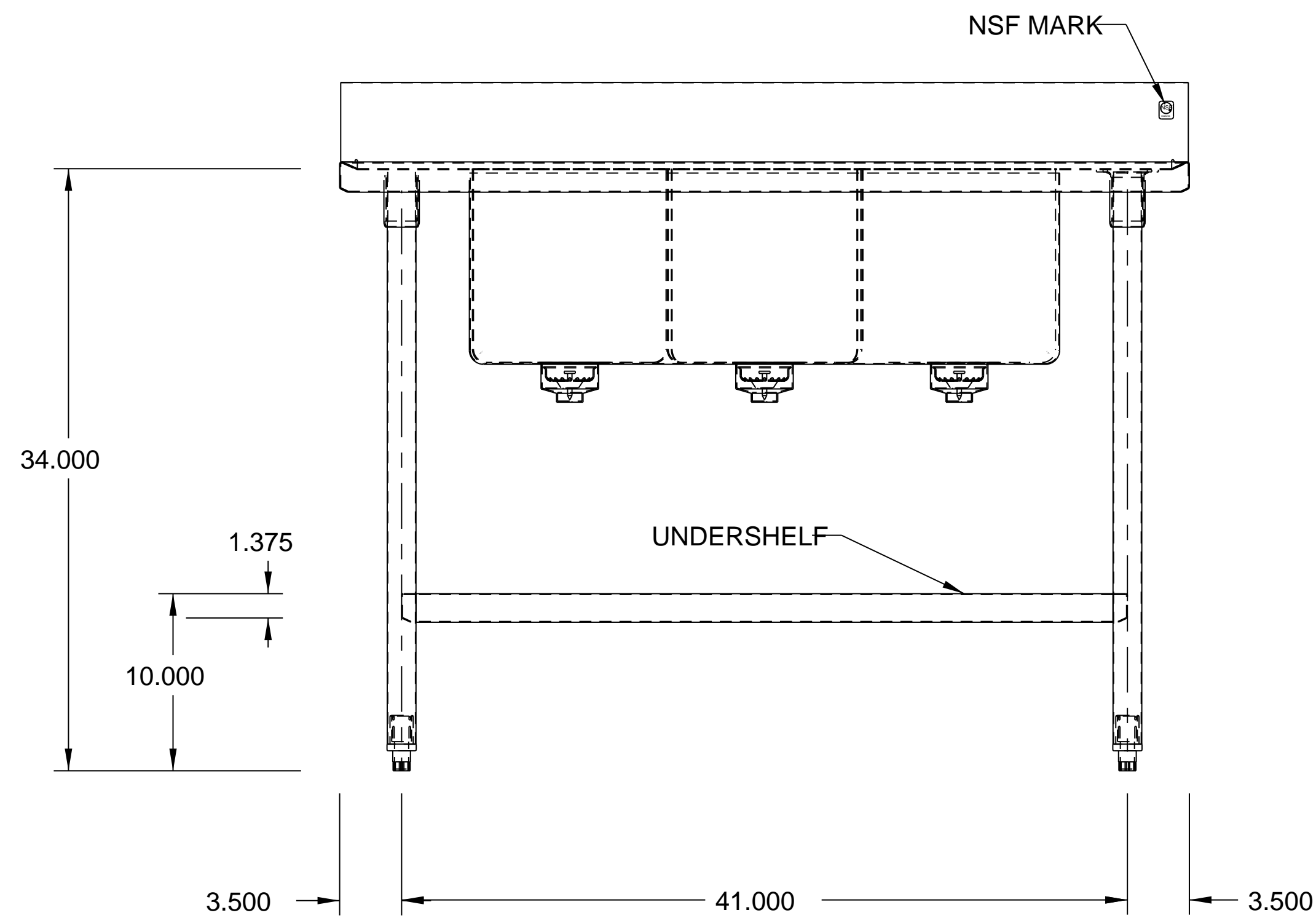
WHICH ARE FULLY WELDED TO

FEET: STN/STL ADJUSTABLE BULLET TYPE.

NOTES: ALL STN/STL TO BE TYPE 304.
ALL STN/STL TO BE POLISHED TO A NO. 5 FINISH.
ALL UNEXPOSED WELDS TO BE COVERED w/ ALUMINUM PAINT.
ALL METAL EDGES AND CORNERS TO BE FILED SMOOTH.



SCALE 0.125



SECTION A-A



#225563 (1) EACH
LABEL IS TO BE PLACED ON
BACKSPLASH OR NOSING

NO.	DATE	REVISIONS	BY

ASSEM CSMS-48-US



PRO