

PURCHASED ITEMS							
KEY	DESCRIPTION	QTY.	U/M	INV. CODE	VENDOR NAME	PART/MODEL NUMBER	PART TYPE
1	COVERED CORNER INSERT	2	EA	B1	COMPONENT	J70-4691	PART
2	FAUCET	1	EA	B1	COMPONENT	KN55-7012	PART
3	LEG GUSSET	4	EA	B1	COMPONENT	A18-0406	PART
4	S/S ADJUSTABLE BULLET FOOT	4	EA	B1	COMPONENT	A10-0851	PART
5	LA WASTE NO OVERFLOW, FLAT STRAINER	2	EA	B1	COMPONENT	D50-7200_MODIFIED_HANDLE	PART
6	PRE-RINSE UNIT	1	EA	B1	T & S	B-0129	PART

ITEM # 2 COMP SINK

TOP: 14 GA. STN/STL ALL WELDED CONSTRUCTION w/ INTEGRAL BACK SPLASH. ALL HORIZONTAL AND VERTICAL CORNERS TO BE COVERED TO A 3/4" RADIUS. SINKS TO BE WELDED INTEGRAL AS SHOWN.

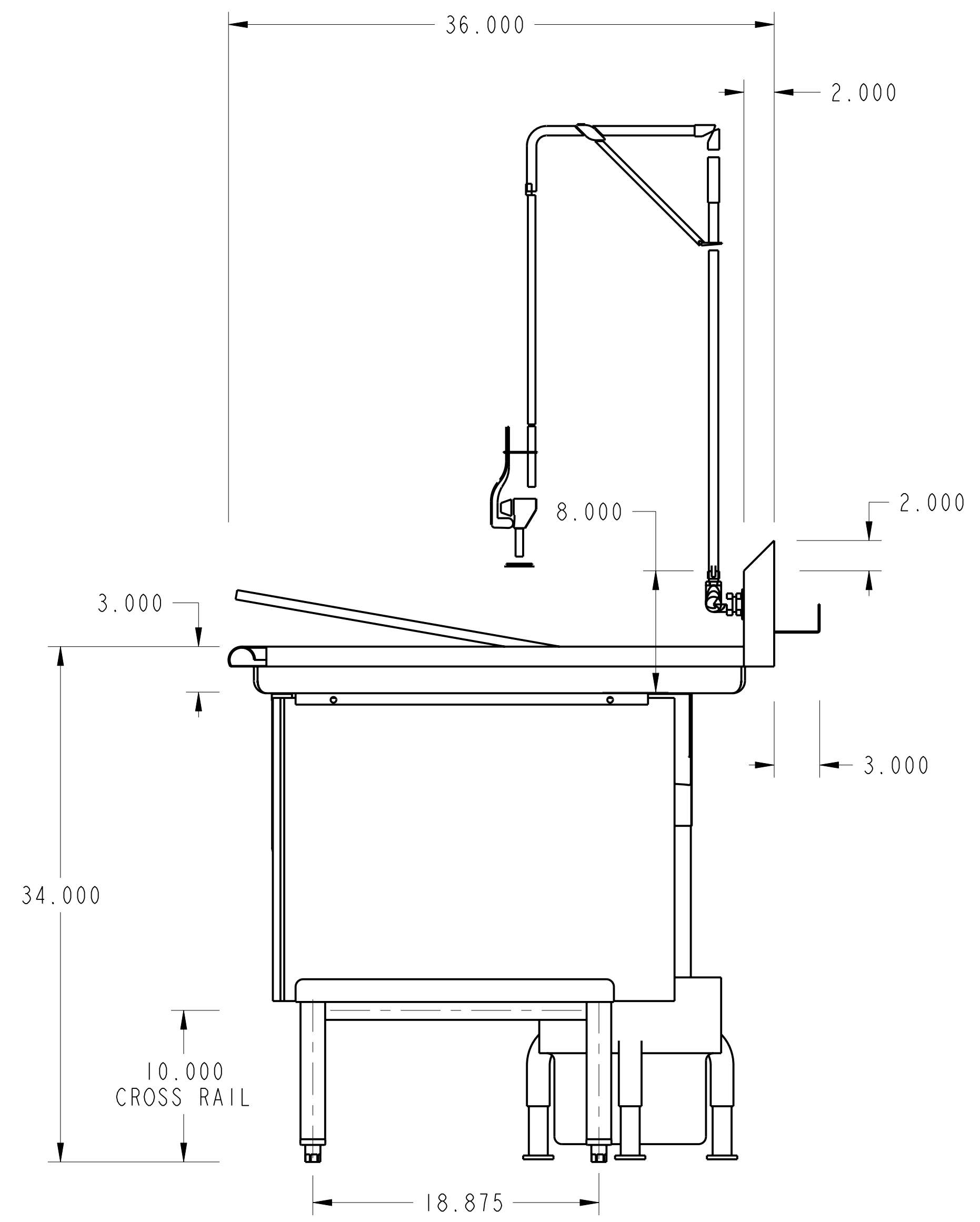
SINKS: 14 GA. STN/STL ALL WELDED CONSTRUCTION. ALL INTERIOR CORNERS TO BE COVERED TO A 3/4" RAD. WITH SPHERICAL INTERSECTIONS. BOTTOM TO BE CREASE TO OPENING FOR LEVER ACTION WASTE.

LEGS: 1 5/8" O.D. STN/STL TUBING HELD IN STN/STL LEG HOLDERS WHICH ARE FULLY WELDED TO REINFORCING PLATE ON UNDER SIDE OF SINK BOWLS.

CROSS RAILS: 1 1/4" O.D. STN/STL TUBING FULLY WELDED TO LEGS.

FEET: STN/STL ADJUSTABLE BULLET TYPE.

NOTES: ALL STN/STL TO BE TYPE 300 SERIES.
ALL STN/STL TO BE POLISHED TO A NO. 5 FINISH.
ALL UNEXPOSED WELDS TO BE COVERED w/ ALUMINUM PAINT.
ALL METAL EDGES AND CORNERS TO BE FILED SMOOTH.



NO.	DATE	REVISIONS	BY
ASSEM		FFPS-78	

