

**HAND SINKS**  
**DH-26, DH-28**  
**(Including Low-Lead Faucet)**

PROJECT#: \_\_\_\_\_

ITEM# \_\_\_\_\_

MODEL# \_\_\_\_\_

**Low Cost Solutions for Back Room Operations:**

- ◆ Supermarkets
- ◆ Convenience Stores
- ◆ Hospitals
- ◆ Factories



**DH-26**

**Features:**

- ◆ Constructed from Heavy Gauge Type 304 Series Stainless Steel
- ◆ Available through the Amtekco Quick Ship Program
- ◆ All Sinks are N.S.F. Listed
- ◆ Multiple Designs for Multiple Applications

**Mechanical Specifications:**

- ◆ Meets “Low Lead” or “Lead-Free” Faucet Specifications
- ◆ Sink Bowl is 13-3/4” x 10” x 5-1/2”
- ◆ Crumb Cup Drain 1-1/2” NPS
- ◆ Faucets 1/2” NPS



**DH-28**

MODEL#	SHIPPING WEIGHT
DH-26	14 lbs.
DH-28	29 lbs.

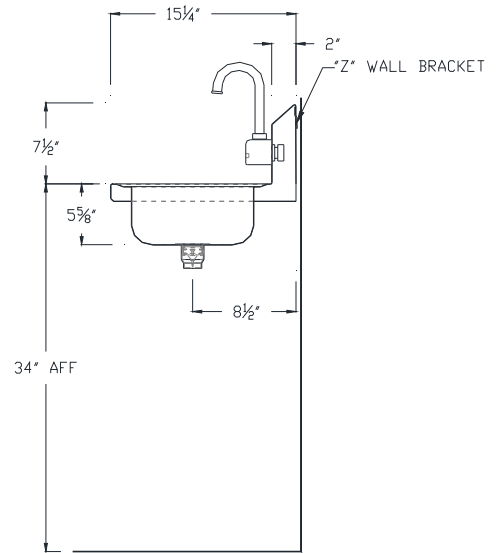
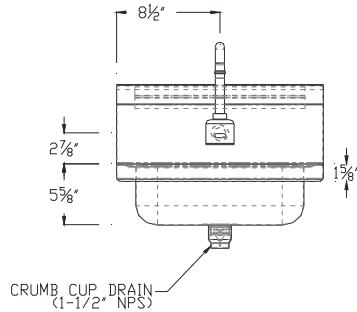
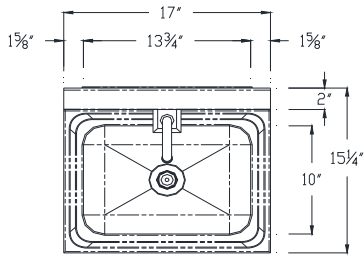
All Models Can Be Shipped U.P.S.

Amtekco offers a full line of standard hand washing sinks to satisfy every requirement and the most rigorous local sanitation requirements. These superior products feature type 304 stainless steel throughout for long life, ease in cleaning and low maintenance. Rugged, heavy gauge, die stamped and welded construction provides for rigid wall mounting for years of trouble free use. All faucets are N.S.F. listed.

**Models are in stock for immediate shipments**



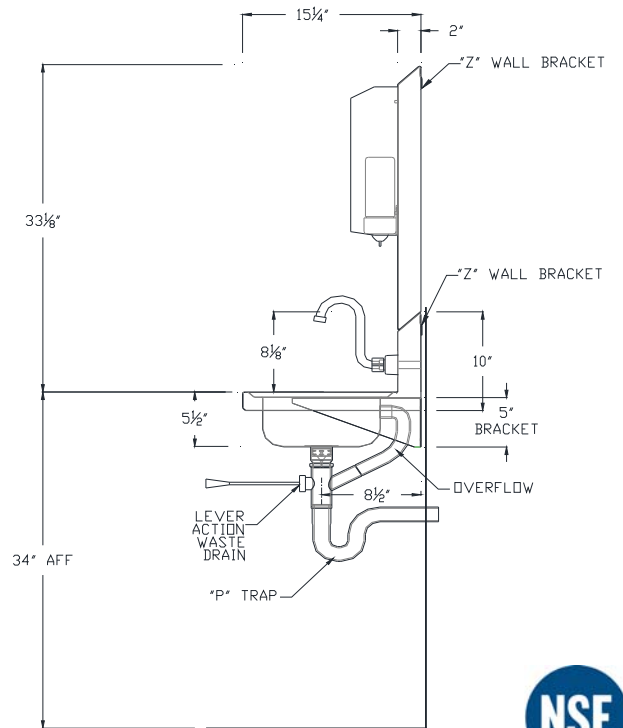
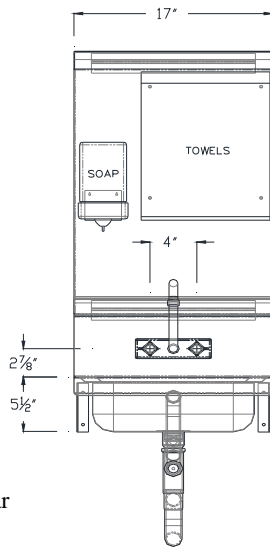
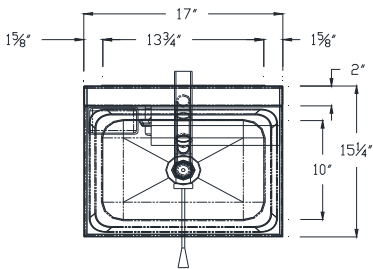
# HAND SINKS DH-26, DH-28 (Including Low-Lead Faucet)



**Accessories:**

- ◆ Low Lead Faucet—#KE19-1000-SDO w/ Goose-neck Spout (1/2" NPS)
- ◆ Crumb Cup Drain (1-1/2" NPS)
- ◆ Wall Mounting Bracket

## DH-26



**Accessories:**

- ◆ Low-Lead Faucet—#KHS15-4000 w/ Gooseneck Spout (1/2" NPS)
- ◆ B-155 Soap Dispenser
- ◆ Towel Dispenser
- ◆ Lever Action Drain w/ Crumb Cup & Rear Overflow (1-1/2" NPS)
- ◆ "P" Trap Assembly
- ◆ S/S Cantilevered Brackets
- ◆ Wall Mounting Bracket

## DH-28

